

Uses of numbers lines

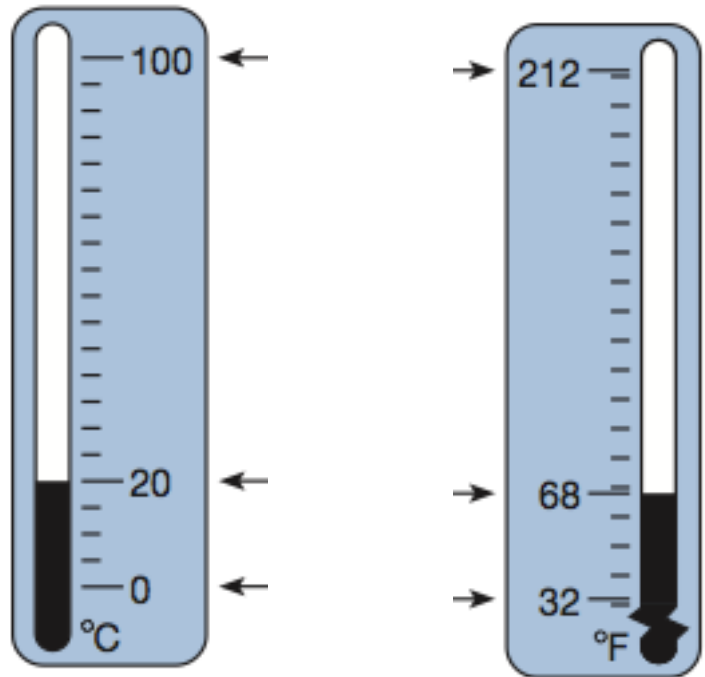
Scales for measuring temperature:

_____ and _____.

Water Boils at 100 degrees C and 212 degrees F.

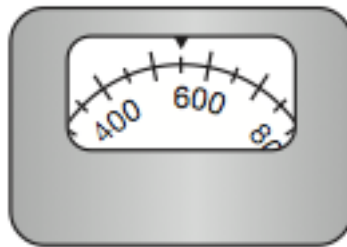
Room Temperature is 20 degrees C and 68 degrees F.

Water Freezes and 0 degrees C and 32 degrees F.



At 6:00 a.m. the temperature was 21°C. The thermometer shows the noon temperature. How many degrees did the temperature increase from 6:00 a.m. to noon?

This number line is an example of a curved number line or scale.



This shows _____.

Draw a horizontal number line from 0 to 500 with only zero and hundreds marked and labeled.